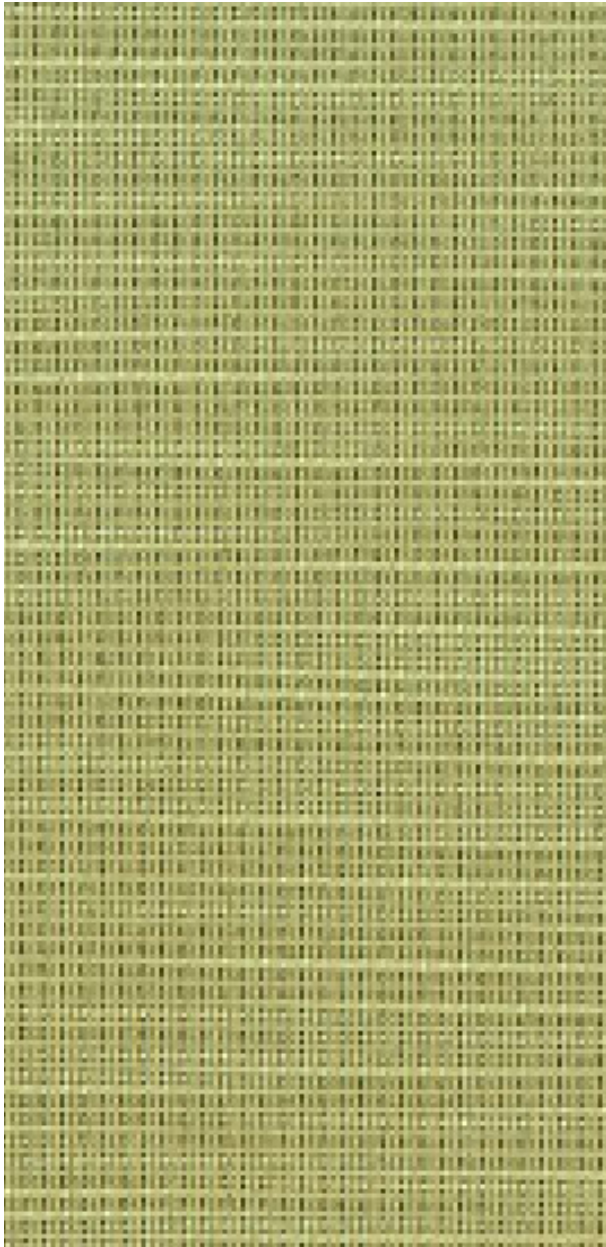
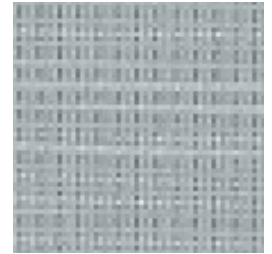


Ridgecrest

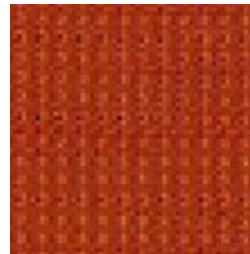
CULP
CONTRACT



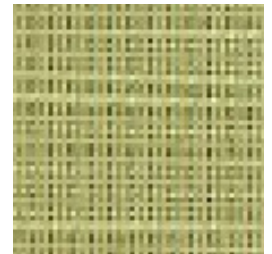
Beach



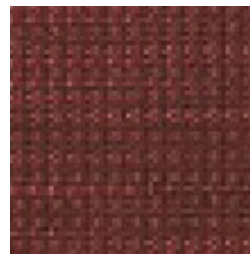
Tide Pool



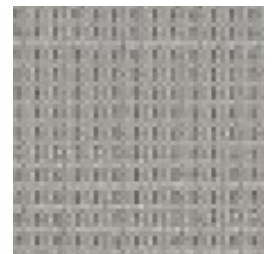
Bittersweet



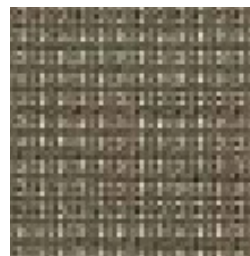
Meadow



Ruby



Sterling



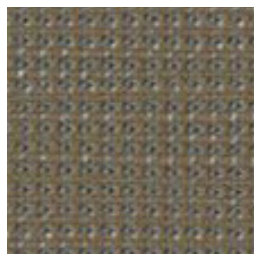
Taupe



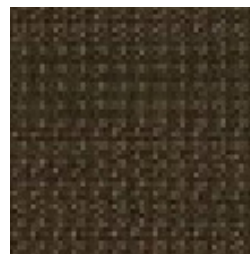
Midnight



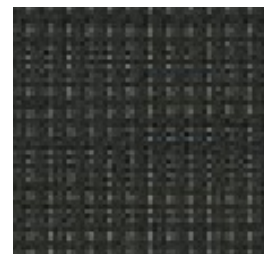
Putty



Mink



Chocolate



Ink

*Digital fabric cards/swatches may not be true representations of color.
We recommend ordering vendor samples to ensure color correctness.

Ridgecrest

Content:	100% Polyester
Backing:	Synthetic latex blend
Weight:	12.96 oz per linear yard
Width:	54"
Abrasion:	Heavy Duty – Exceeds 100,000 Cycles (Wyzenbeek – Cotton Duck Abradant) (ASTM D4157)
Light Fastness:	Class 4/40 hrs. min. (AATCC16A)
Color Fastness:	Class 4 (ASTM D3597, AATCC 8) Wet Class 5 (ASTM D3597, AATCC 8) Dry
Physical Properties:	Class 4 (ASTM D3511) Brush Pill 80 lbs. warp, 68 lbs. weft (ASTM D 5034) Breaking Strength 84 lbs. warp, 72 lbs. weft (ASTM D 4034) Seam Slippage
Passes:	California Tech. Bulletin #117 – 2013 UFAC Class 1 NFPA 260 Class 1
Cleanability:	W - Water based cleaners may be used.
Origin:	Made in China

CULP
CONTRACT

For samples or further information, please contact:
Culp, Inc.
Contract Fabrics
1823 Eastchester Drive
High Point, NC 27265
Phone: (336) 889-5161
Fax: (336) 899-7848
www.culpcontract.com

12-7-2017

Grade **2**