

Winslow

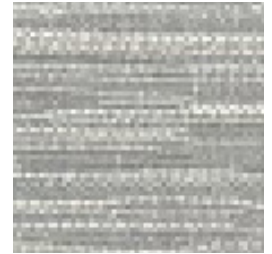
CULP
CONTRACT



Moonbeam



Putty



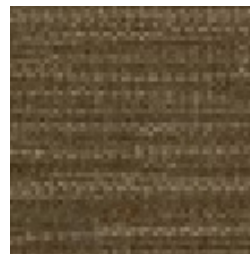
Moonbeam



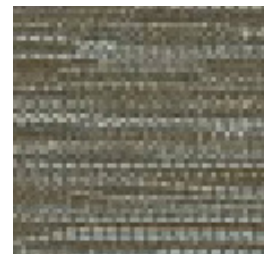
Cashew



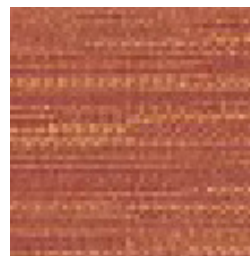
Smoke Blue



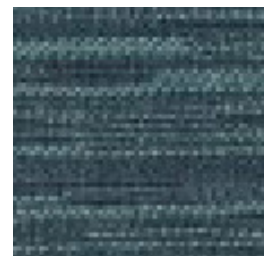
Fudge



Belize



Blaze



Peacock



Jet



Mineral



Deep Red



Blue Chip

*Digital fabric cards/swatches may not be true representations of color.
We recommend ordering vendor samples to ensure color correctness.

Grade **3**

Winslow

Content:	100% Polyester
Backing:	Synthetic latex blend
Repeat:	15"H / 5" V
Weight:	11.2 oz. per linear yard
Width:	54"
Abrasion:	Heavy Duty – Exceeds 40,000 Cycles (Wyzenbeek – Cotton Duck Abradant) (ASTM D4157)
Light Fastness:	Class 4/40 hrs. min. (AATCC16A)
Color Fastness:	Class 4 (ASTM D-3597, AATCC 8) Wet Class 4 (ASTM D-3597, AATCC 8) Dry
Physical Properties:	Class 4 (ASTM D3511) Brush Pill 135 lbs. warp, 184 lbs. weft (ASTM D 5034) Breaking Strength 74 lbs. warp, 49 lbs. weft (ASTM D 4034) Seam Slippage
Passes:	California Tech. Bulletin #117 – 2013 UFAC Class 1 NFPA 260 Class 1
Cleanability:	W - Water based cleaners may be used.
Origin:	Made in China

CULP
CONTRACT

For samples or further information, please contact:
Culp, Inc.
Contract Fabrics
1823 Eastchester Drive
High Point, NC 27265
Phone: (336) 889-5161
Fax: (336) 899-7848
www.culpcontract.com

9-2-2018

Grade **3**